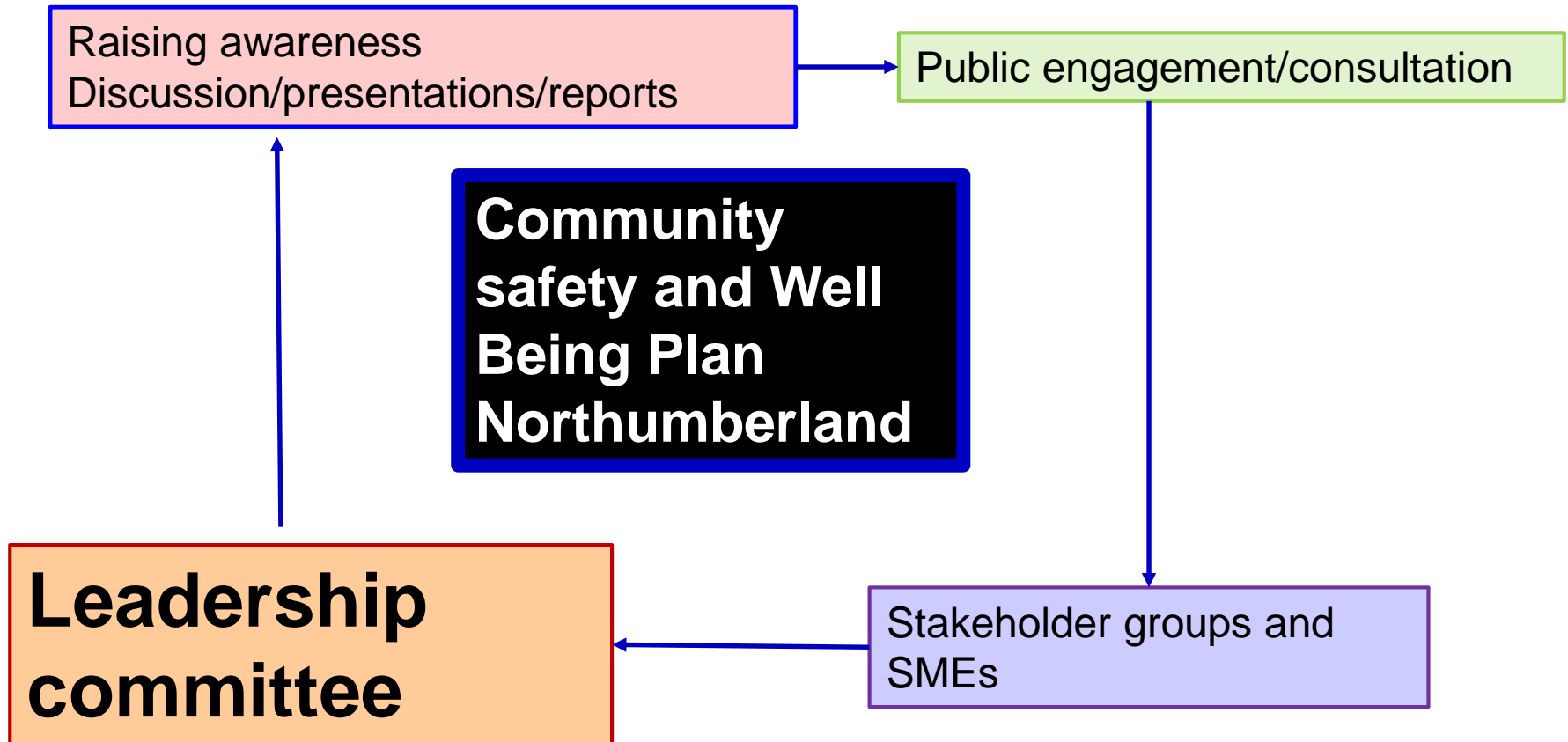




Join-in Northumberland
Community Safety and Well-being Questionnaire

Sarah Tanner
Community Services Manager

Next Steps



Advisory Committee

- ▶ Multi-sectoral collaboration is a key factor to successful CSWB planning,
- ▶ An ideal advisory committee member should have
 - ▶ enough knowledge about their respective sector to identify where potential gaps or duplication in services exist
 - ▶ Identify where linkages could occur with other sectors.
 - ▶ have knowledge and understanding of the other agencies and organizations within their sector,
 - ▶ be able to leverage their expertise if required.



[Home](#) » [Community Safety & Well-being Plan](#)

Community Safety & Well-being Plan

Northumberland County is inviting perspectives from across the community as we develop a Community Safety and Well-being Plan.

Required under the Province's Safer Ontario Act, 2018, this plan will outline actions for improving safety and well-being in our community. The goal is for residents and community partners to collectively address the root causes of crime and complex social issues by focusing on prevention methods that will improve quality of life for all.



Register to Join In
the conversation

[Who's Listening](#)

How many responses?

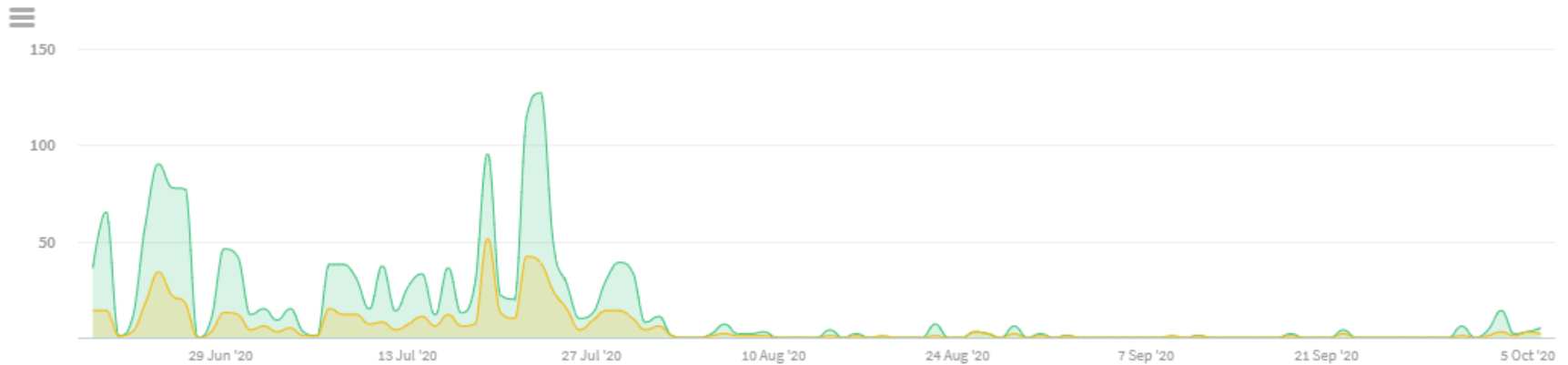
- ▶ VISITORS
 - ▶ 636
- ▶ RESPONSES
 - ▶ 143
 - ▶ Registered
 - ▶ 143
 - ▶ Unverified
 - ▶ 0
 - ▶ Anonymous
 - ▶ 0

Visitors to the site

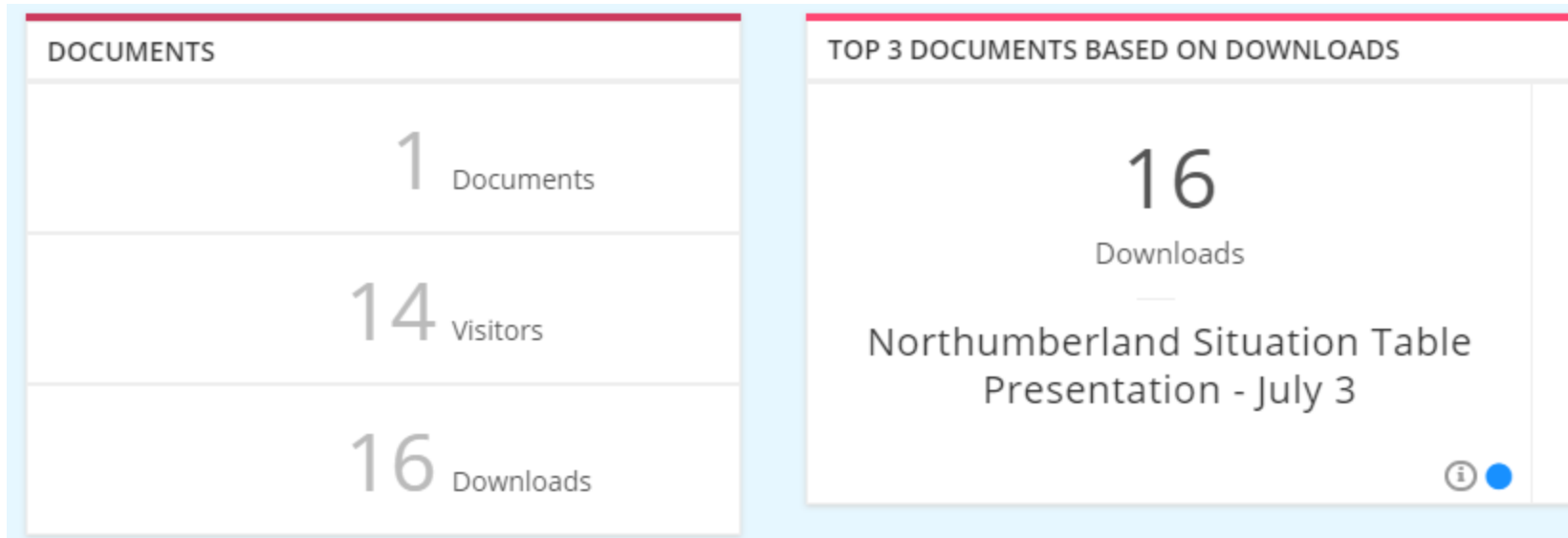
Visitors Summary

Northumberland County from 18 Jun '20 to 06 Oct '20

DAILY MONTHLY



Downloads



How did people hear about this questionnaire?

TRAFFIC CHANNEL	AWARE VISITS	INFORMED VISITS(%)	ENGAGED VISITS(%)
DIRECT	362	243 (67.1%)	117 (32.3%)
SOCIAL	152	110 (72.4%)	12 (7.9%)
EMAIL	8	5 (62.5%)	1 (12.5%)
SEARCH ENGINE	20	9 (45%)	1 (5%)
.GOV SITES	0	0 (0%)	0 (0%)
REFERRALS	94	30 (31.9%)	14 (14.9%)

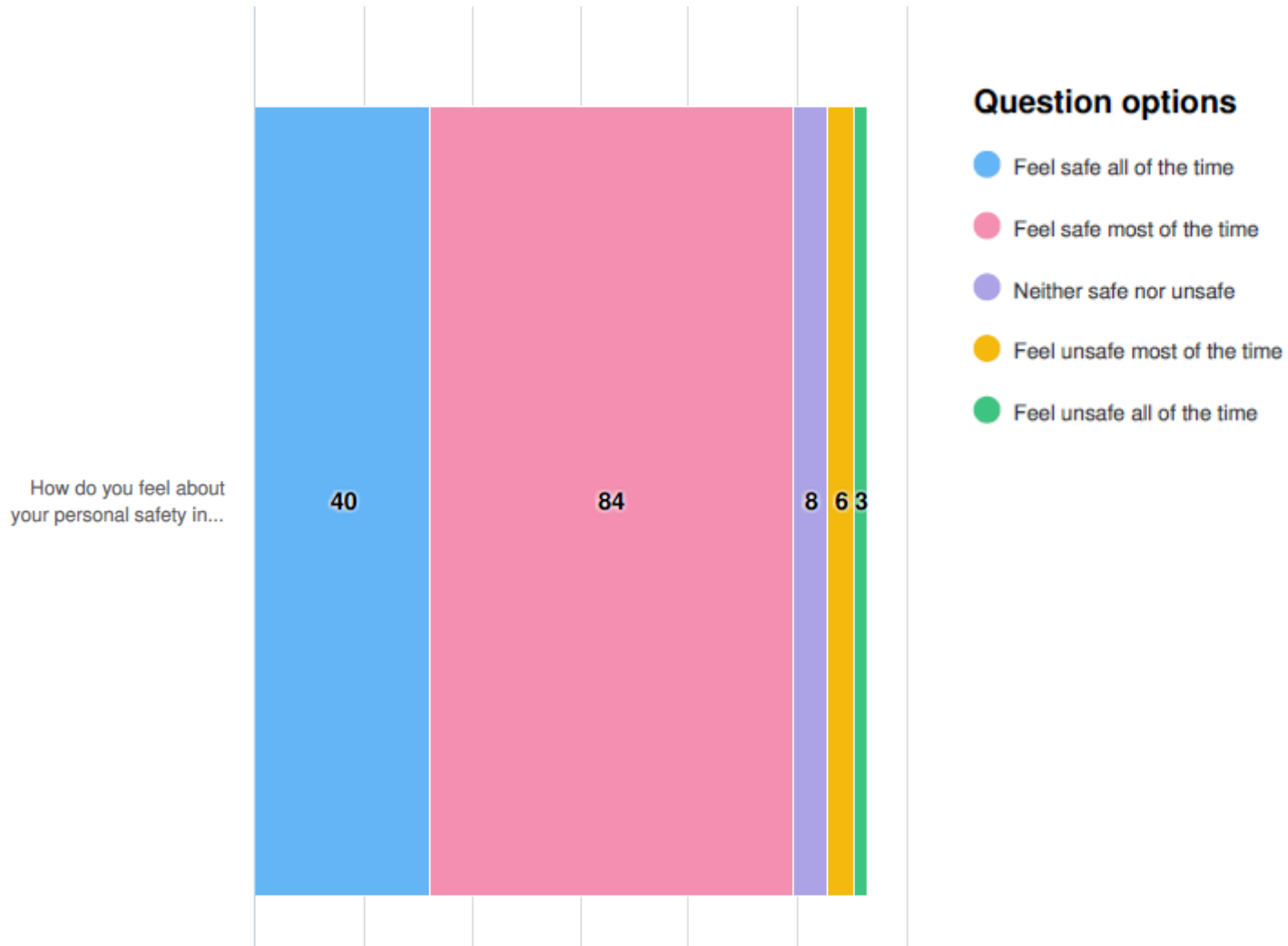
5 most important community safety and well being priorities

Affordable housing	2.33
Housing and homelessness	3.43
Mental health	3.67
Opportunities for employment and employment skills development	3.98
Access to services	3.98
Substance misuse/addictions	4.26
Poverty and income	4.32
Crime prevention	4.58
Food security	4.79

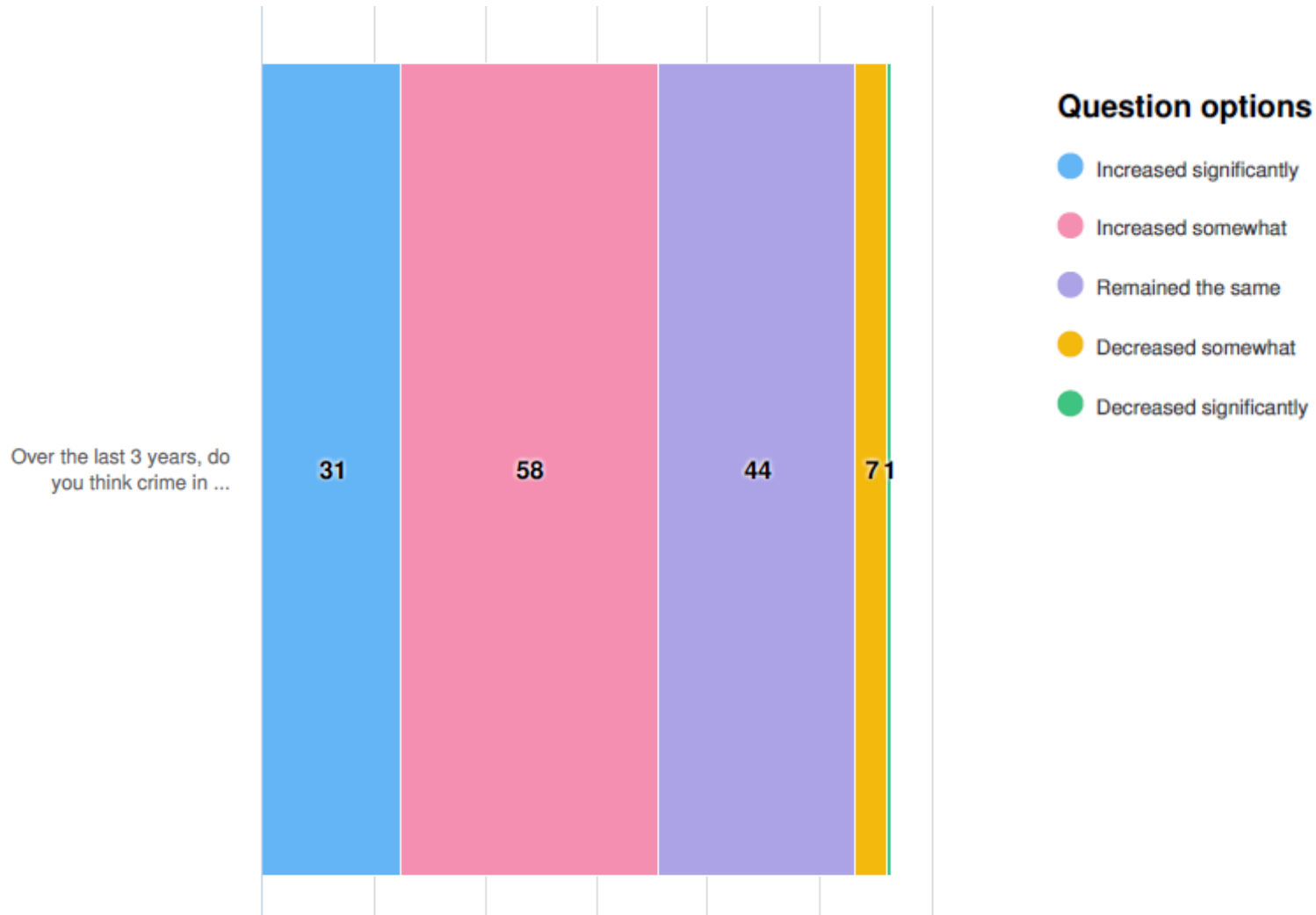
Priorities contd

Coordination between services in the community	4.82
Support for youth that are vulnerable/at-risk	4.84
Personal and overall community security and safety	4.95
Community belonging	5.00
Aging in place	5.33
Healthy childhood development	6.81
Accessibility for persons with disabilities	7.23
Age friendly initiatives	8.00
Anti-racism initiatives	8.24
Traffic safety	9.06
Other	10.00
Human trafficking	11.75
Intimate partner violence	13.22
Anti-homophobia initiatives	15.88
Injury prevention	17.00

Personal safety

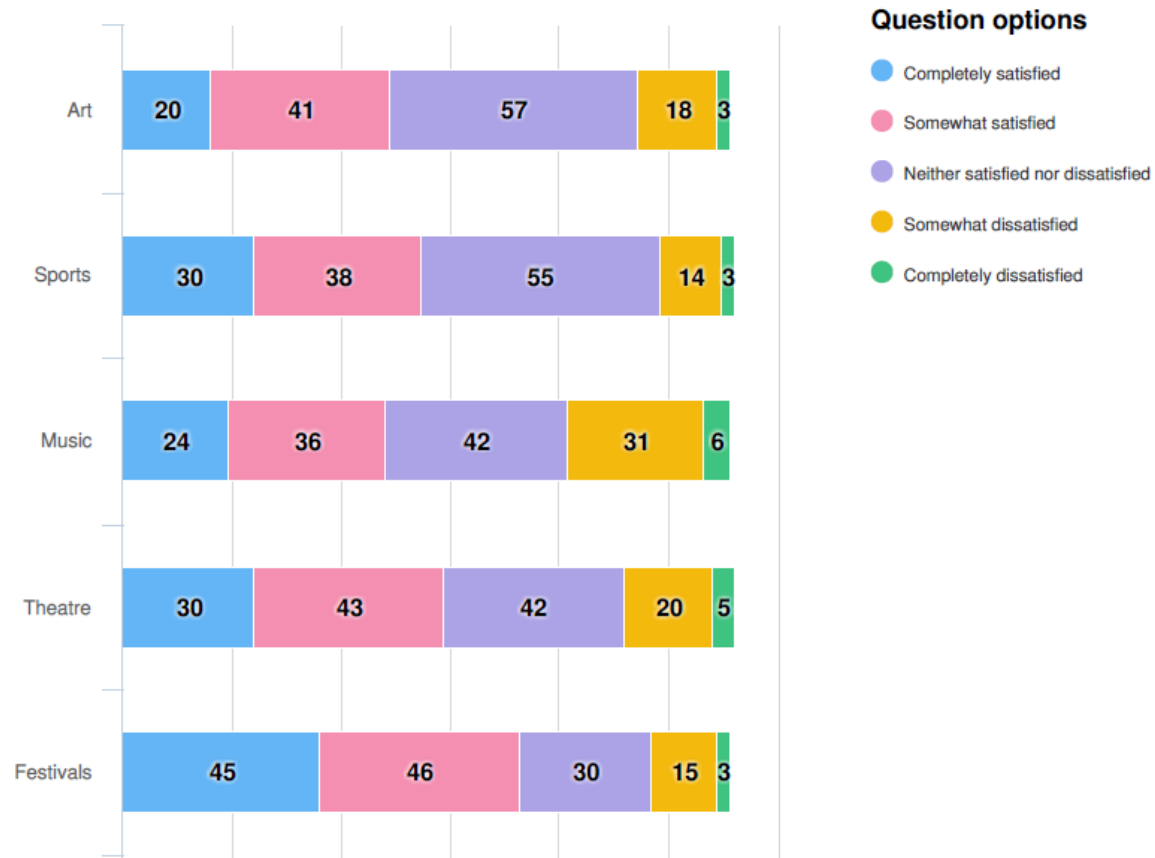


Feelings about crime

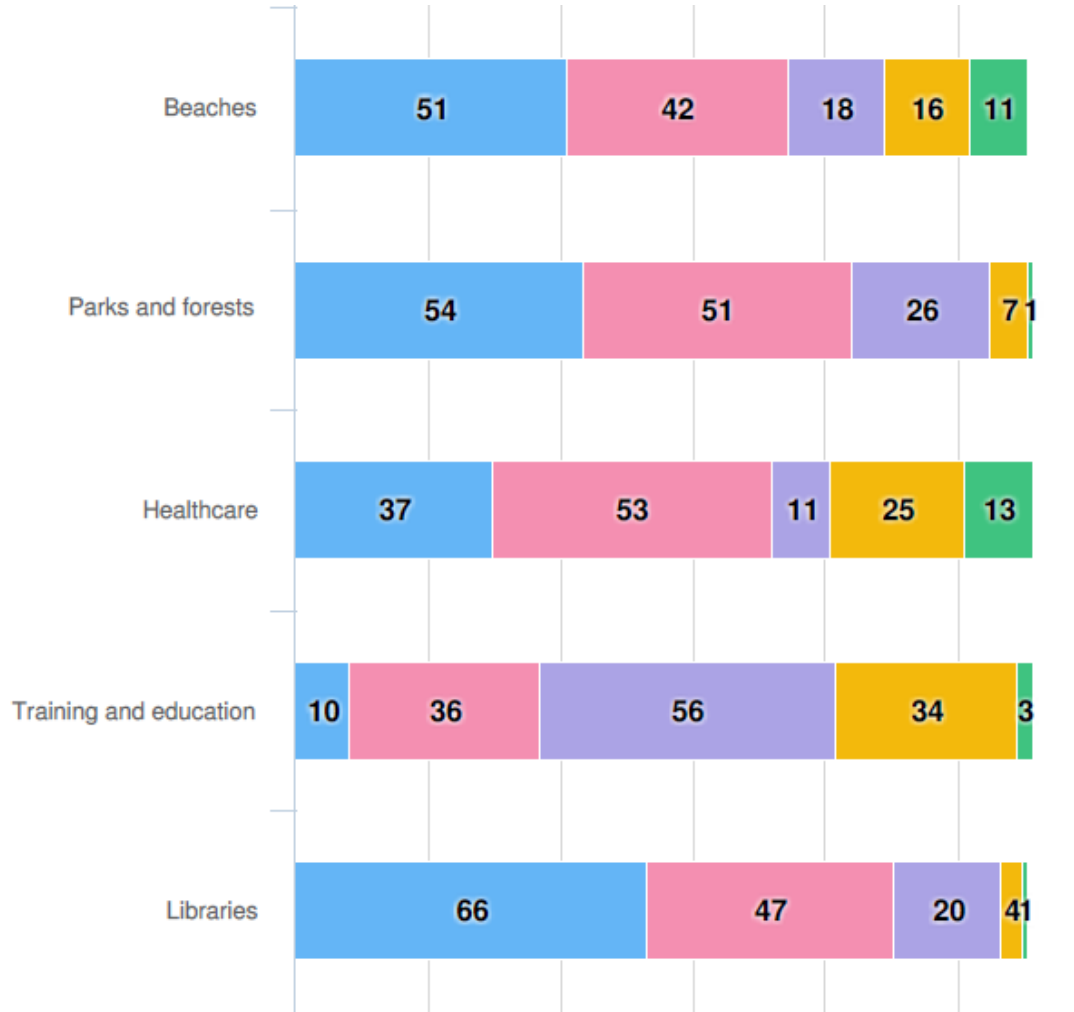


Environment and culture

Please rate your satisfaction with the accessibility (location and affordability) of the following activities or services in your community:

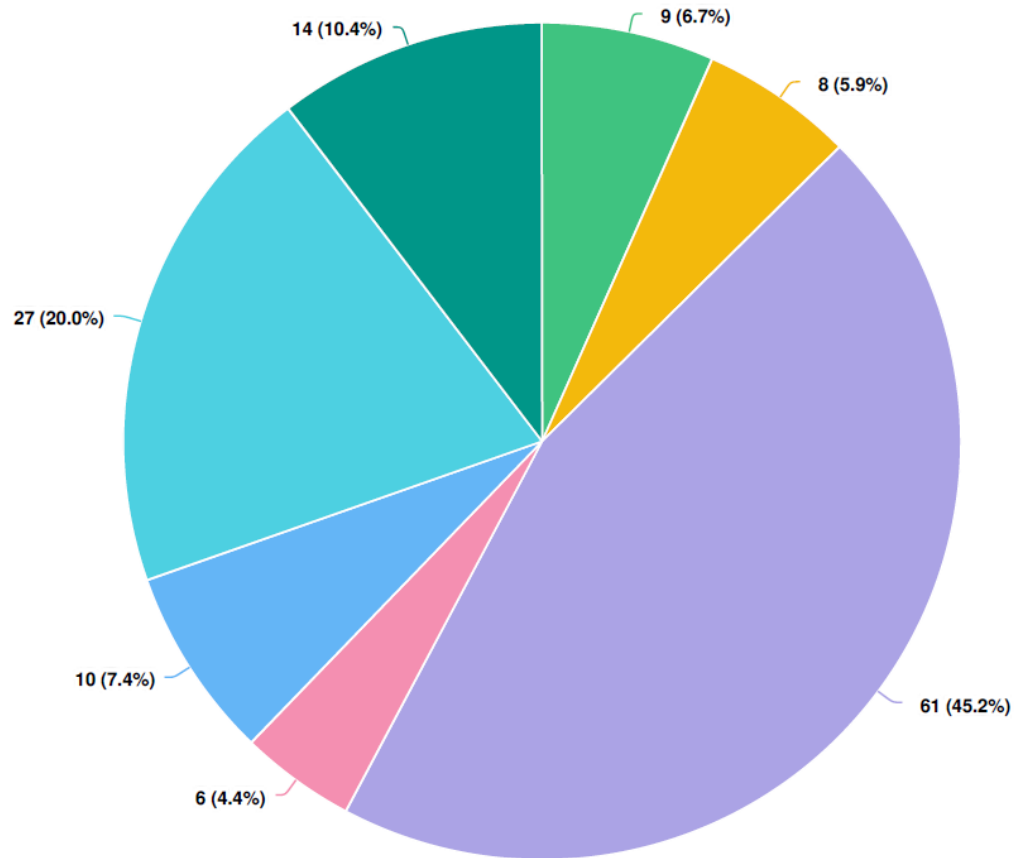


Contd...



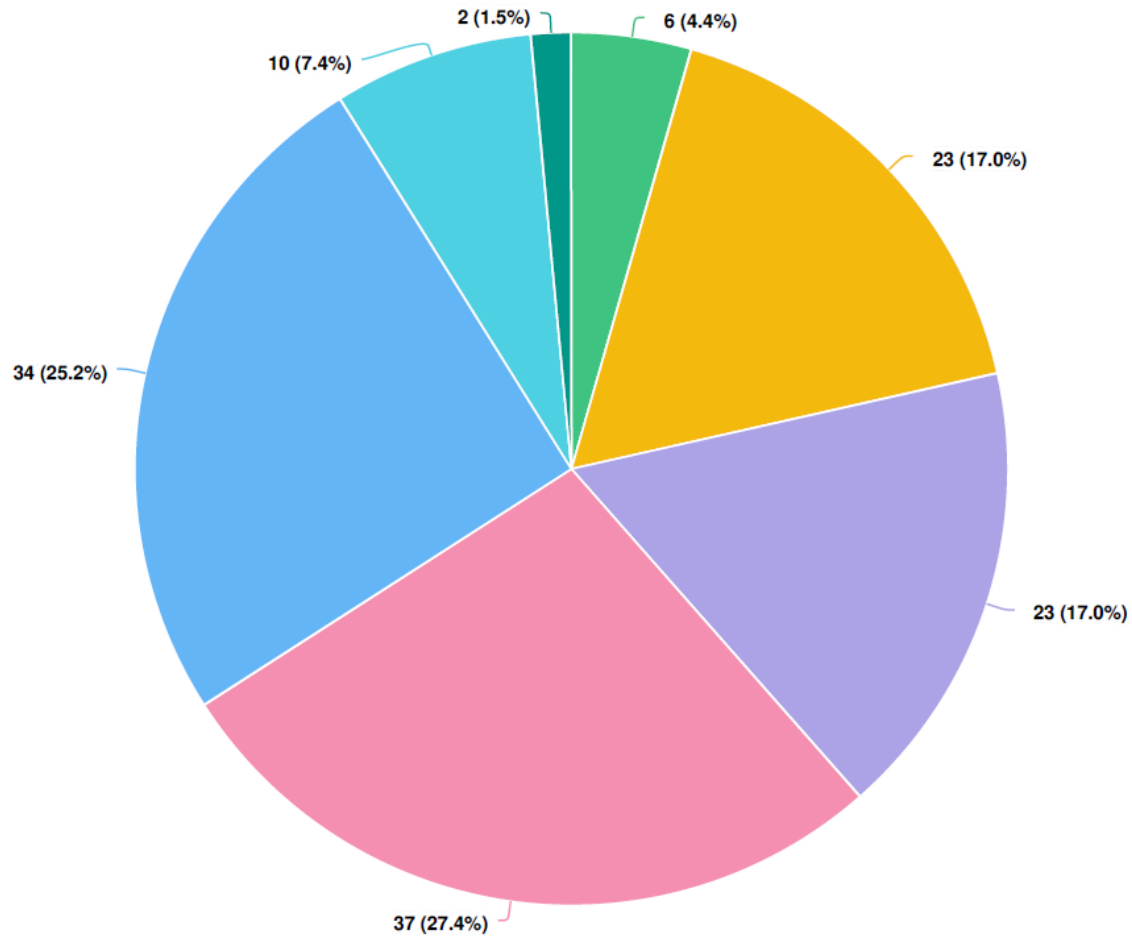
Where do participants reside?

- Municipality of Trent Hills
- Municipality of Port Hope
- Township of Hamilton
- Township of Cramahe
- Town of Cobourg
- Municipality of Brighton
- Township of Alnwick/Haldimand



Ages of participants

● 79-88 ● 69-78 ● 59-68 ● 49-58 ● 39-48 ● 29-38 ● 18-28



How do participants self identify

- Other (please specify)
- Prefer not to answer
- Rural Resident
- Person Living in Poverty
- Person with Disability
- Older Adult
- Immigrant/Newcomer
- LGBTQ2S+
- Racialized Person
- Indigenous Person

Comments

Community member info & ongoing support HUB

Every person who lives (pays rent) and/or pays taxes in our community would receive a login to a community HUB - this hub would be where they would find info re: anything to do with our community especially in regards to connecting to services for Mental Health, Youth programs, Kids programs and funding for sports & arts etc..

With a forecast increase in population growth , newcomers will be joining the flow bringing more diversity and cultural changes.

Immigration needs to be part of the planning conversation for inclusion, equity and race relations that will affect housing, the school boards, etc.... I suggest the planning committee to invite one of the settlement agencies in the region to join the consultation committee (I.E. [www.quinteimmigration .ca](http://www.quinteimmigration.ca))

Next steps

- ▶ Analyze results
- ▶ Align with Situation table data, crime and incident data from Police, EMS and Fire
- ▶ Align with other local data from youth, homelessness, income, employment, education and courts/justice
- ▶ Synthesize with Housing and homelessness plan priorities
- ▶ Determine top priorities for Northumberland plan
- ▶ Align with strategic objectives including County, Health, Police and other sectors